

Southern Star

13.8 VOLT 4AMP. peak MODEL M 9545 REGULATED POWER SUPPLY

FULLY APPROVED BY THE ELECTRICITY AUTHORITY,
APPROVAL NO. N 1188 M 9545 13.8V.d.c. / 1.5A. CONTINUOUS



USE

This power supply has been specifically designed with the CB RADIO user in mind. It suits all units up to 25Watts including SSB models.

It is also ideal for the operation of appliances normally requiring 13.8V. D.C. (12Volt nominal) input.

Operation of car radios, car stereos, 12V. tools, 12V. cassette units, train sets, toys, etc., are typical uses.

OPERATION

With the power switch in the off position, plug the AC cord into the power outlet. Connect the appliance to be used to the two terminals on the back panel. Insure that you connect the POSITIVE (+) lead of the appliance to the POSITIVE (+) terminal and the NEGATIVE (-) lead to the NEGATIVE terminal of the power supply. Incorrect connection or polarity reversal may result in damage to the appliance, the power supply or both.

SPECIFICATION

INPUT: 240 Volts 50Hz. A.C. mains

OUTPUT: 13.8 Volts D.C.

4 Amp. peak

1.5 Amp. continuous

*NOISE: Less than 100 mV.

*REGULATION: Better than 1%

OVERLOAD 1. 3 Amps Standard 3AG Fuse
PROTECTION: 2. Output Over Voltage protection
-see Note A

*With an input of 240V.A.C., output 13.8V., 1.5A.D.C. with resistive load.

CAUTION:

Do not substitute a larger value fuse for the 3A. originally installed in the unit, damage could occur and warranty may be void.

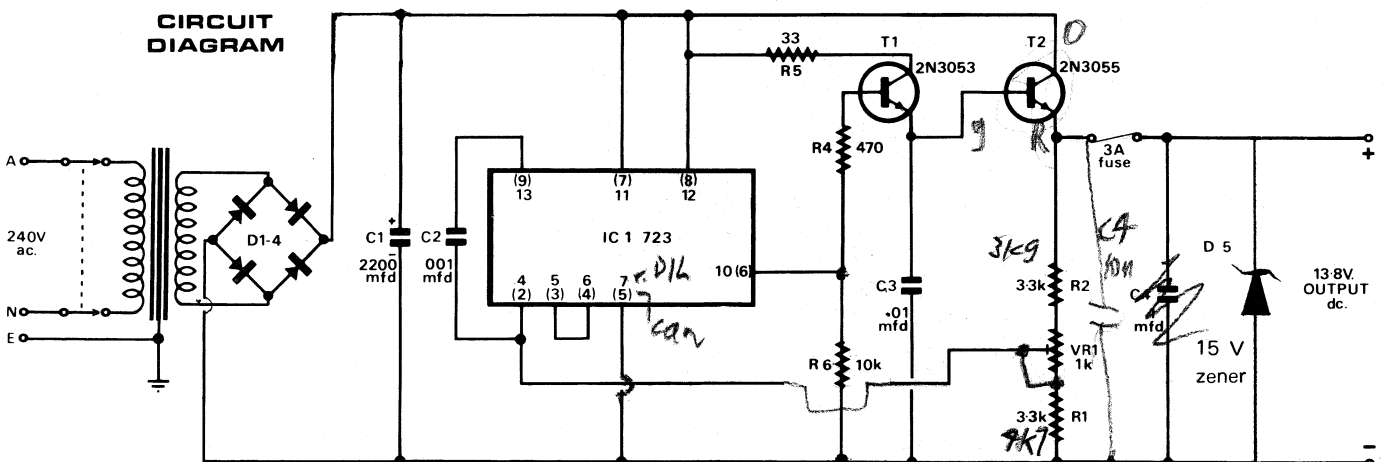
WARRANTY

The M-9545 power supply is guaranteed against faulty material or workmanship for a period of 90 days from the date of purchase. No other warranty is expressed or implied and the liability of the company is limited to the repair or replacement of a faulty unit.

Warranty may be termed void by the manufacturer if a unit is misused or tampered with. If any problems do occur during the warranty period, the unit should be returned, freight pre-paid to:

D. S. DISTRIBUTORS PTY. LTD.
24 CARLOTTA ST.,
ARTARMON NSW AUSTRALIA.
PHONE 02-4395311

CIRCUIT DIAGRAM



Note A: Since it is possible in a regulated power supply for the voltage to almost double should certain components fall, usually with damage to the equipment connected to it, M 9545 incorporates in this power supply an "over-voltage" protector. This is a 15-volt ($\pm 5\%$) zener diode placed across the output terminals. If for any reason the voltage tries to rise above 15 volts, the zener diode will short immediately and blow the 3-amp fuse. The power supply will not work until both fuse and diode have been replaced (both incidentally, very inexpensive components). Such over-voltage indicates a malfunction of the regulator circuit and service by a competent technician is indicated.

Round 723CH / DIL 723CN