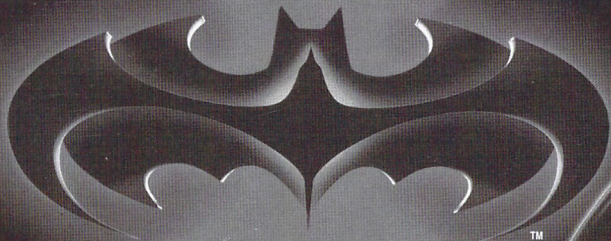
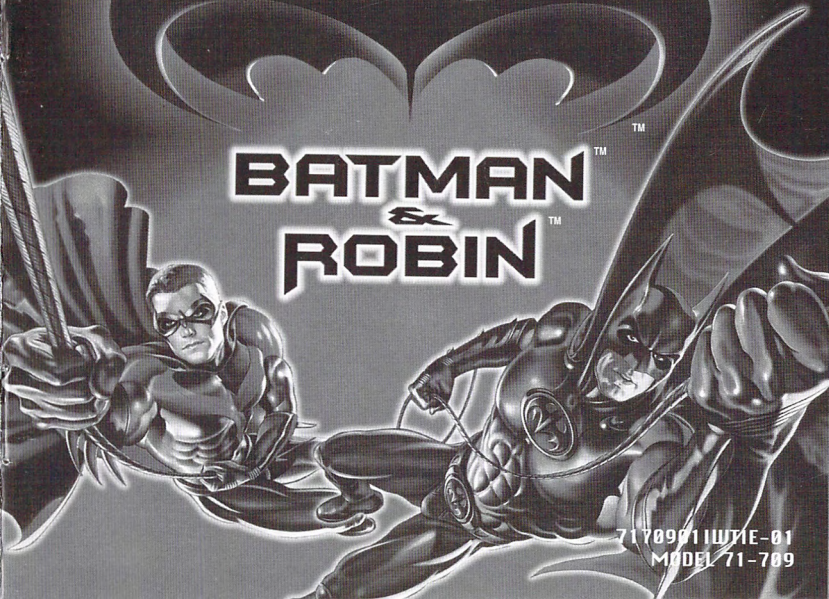


TIGER®



BATMAN™
&
ROBIN™



71789911W7IE-01
MODEL 71-789

TM
game.com



CONTENTS

I NTRODUCTION	3
O BJECT	3
P LAYING THE GAME	4 - 6
T HE CONTROLS	7
O PTIONS	8
D EFFECTIVE CARTS	9
W ARRANTY	10 - 11

INTRODUCTION

WHEN MILLIONAIRE BRUCE WAYNE WITNESSED THE MURDER OF HIS PARENTS, HE SWORE TO SPEND THE REST OF HIS LIFE BRINGING CRIMINALS TO JUSTICE AND PROTECTING THE INNOCENT. BY DAY, HE CONTINUES HIS LIFE AS A WEALTHY PHILANTHROPIST, BUT BY NIGHT HE BECOMES THE DARK KNIGHT : BATMAN.

AIDING HIM IN HIS CRUSADE AGAINST THE FORCES OF EVIL IS FORMER CIRCUS ACROBAT DICK GRAYSON, BETTER KNOWN AS ROBIN.

OBJECT

MR. FREEZE HAS DESCENDED UPON GOTHAM CITY LIKE AN UNWELCOME COLD FRONT, CASTING A DEADLY CHILL UPON THE DARK URBAN AIR. THIS DIABOLICAL GENIUS IS ATTEMPTING TO STEAL THE CITY'S DIAMONDS IN ORDER TO BRING HIS WIFE BACK FROM HER CRYOGENIC SLEEP. IN THE PROCESS HE'LL MAKE SURE THAT NOTHING, ESPECIALLY THE LAW, CAN THAW HIS ICY PLANS.

POISON IVY, FORMERLY PAMELA ISLEY, WAS A BRILLIANT BOTANIST UNTIL AN EXPERIMENTAL SERUM TURNED HER INTO A BEAUTIFUL, BUT LETHAL, PLANT ADVOCATE. WANTING NOTHING MORE THAN THE ELIMINATION OF ALL ANIMAL SPECIES, SHE AND HER BRUTISH ASSISTANT, BANE, JUST MAY GET THEIR WISH.

MANIPULATED BY POISON IVY, MR. FREEZE INTENDS TO PLACE GOTHAM CITY IN A PRISON OF ICE THAT MAY NEVER MELT. IT IS UP TO YOU, PLAYING AS EITHER BATMAN OR ROBIN, TO STOP THESE CRIMINALS BEFORE IT IS TOO LATE.



PLAYING THE GAME

MAKE SURE YOUR GAME.COM SYSTEM IS OFF. INSERT THE BATMAN & ROBIN CARTRIDGE INTO CARTRIDGE SLOT 1. TURN ON GAME.COM. TOUCH CARTRIDGE ON THE MAIN MENU SCREEN. AFTER A BRIEF ANIMATION, YOU WILL FIND YOURSELF AT THE MAIN BATMAN & ROBIN SCREEN.

AT THE MAIN BATMAN & ROBIN SCREEN, TOUCH THE START BUTTON. THIS WILL BEGIN THE GAME. YOUR OTHER CHOICE, OPTIONS, WILL BE DISCUSSED LATER.



TOUCH HERE TO BEGIN THE ADVENTURE.

NOW YOU MUST CHOOSE TO PLAY AS EITHER BATMAN OR ROBIN. TOUCH, OR PRESS THE D-PAD IN THE DIRECTION OF, THE HERO YOU WISH TO PLAY. TOUCH THE AREA AGAIN (OR PRESS THE "A" BUTTON) TO LOCK IN YOUR CHOICE.



YOU CAN PLAY AS EITHER BATMAN OR ROBIN!

NEXT YOU MUST DECIDE WHICH EQUIPMENT TO TAKE ON YOUR QUEST. YOU MAY CHOOSE TWO ITEMS TO CARRY. EACH ONE HAS A DIFFERENT FUNCTION. YOU SHOULD EXPERIMENT WITH DIFFERENT COMBINATIONS IN ORDER TO DETERMINE WHICH WILL BE THE MOST EFFECTIVE. TOUCH THE TWO YOU WANT. YOU MAY SELECT FROM THE FOLLOWING:

BATARANGS/THROWING BIRDS
GRAPPLING HOOK
ICE BLAST CAPE
GAS GRENADES
ICE BLADES

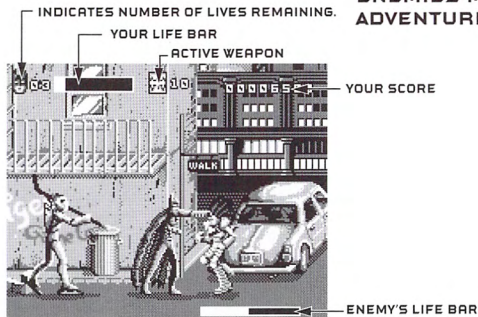
WHEN YOU ARE HAPPY WITH YOUR SELECTIONS, TOUCH START.



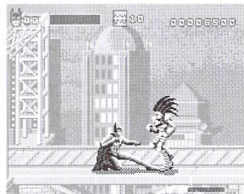
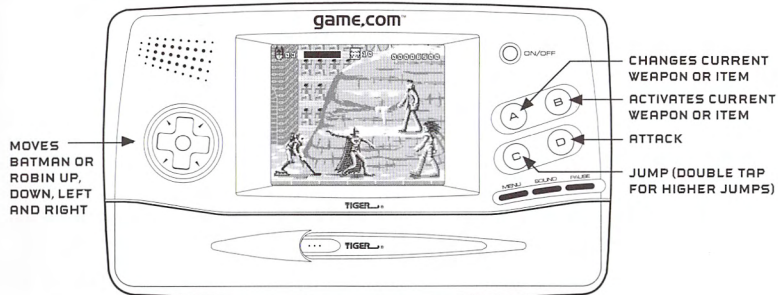
THE GREAT DETECTIVES ALWAYS PLAN AHEAD!

NOW THE ADVENTURE IS READY TO BEGIN. YOU WILL FIND YOURSELF ON THE STREETS OF GOTHAM CITY. MR. FREEZE HAS SENT HIS THUGS OUT AFTER YOU. YOU WILL HAVE TO USE YOUR WITS, CUNNING AND SHEER BRUTE FORCE TO FIGHT YOUR WAY THROUGH THEM.

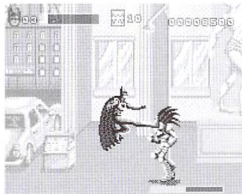
EACH LEVEL OF THE GAME IS BROKEN UP INTO SEVERAL SMALLER SECTIONS. ONLY WHEN YOU HAVE DEFEATED A CERTAIN NUMBER OF ENEMIES MAY YOU MOVE ON IN YOUR ADVENTURE.



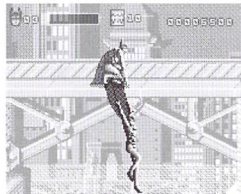
THE CONTROLS



PRESS DOWN ▼ ON THE D-PAD AND ◻ FOR A LOW KICK



PRESS ◻ AND ◻ FOR A JUMP KICK

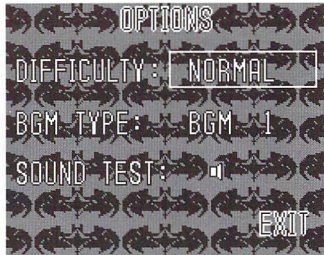


PRESS DOWN ▼ ON THE D-PAD AND ◻ TO JUMP DOWN OFF OF A LEDGE

OPTIONS

IF YOU TOUCH "OPTIONS" ON THE BATMAN & ROBIN TITLE SCREEN YOU WILL BE TAKEN TO THE OPTIONS SCREEN. USING THIS MENU YOU WILL BE ABLE TO CHANGE THE OPTIONS THAT WILL AFFECT YOUR GAME.

TO CHANGE ANY OF THE OPTIONS ON THIS SCREEN FIRST TOUCH THE OPTION TO HIGHLIGHT IT. YOU MAY THEN TAP THE OPTION AGAIN TO CYCLE THROUGH THE CHOICES.



YOU MAY CHANGE THE GAME DIFFICULTY HERE

THIS SCREEN WILL ALLOW YOU TO PLAY A GAME OF BATMAN & ROBIN USING VARIOUS DIFFICULTY SETTINGS. YOU MAY CHOOSE FROM EASY, NORMAL, HARD OR NIGHTMARE. THE HARDER THE GAME, THE MORE ENEMIES THAT WILL ATTACK YOU.

IF YOU WANT TO LISTEN TO THE GAME'S BACKGROUND MUSIC, HIGHLIGHT BGM AND THEN TOUCH THE SPEAKER ICON. YOU MAY CYCLE THROUGH THE DIFFERENT CHOICES IF YOU WISH.

DEFECTIVE CARTS

IF YOU FIND THAT YOUR NEW BATMAN GAME.COM CARTRIDGE IS DAMAGED OR NON-FUNCTIONAL, DO NOT RETURN THE GAME TO THE STORE. THE STORE WILL NOT HAVE REPLACEMENT CARTRIDGES. INSTEAD WRITE TO US AT:

**TIGER ELECTRONICS REPAIR CENTER
980 WOODLANDS PARKWAY
VERNON HILLS, ILLINOIS 60061 USA**

PLEASE INCLUDE A NOTE WITH YOUR RETURN EXPLAINING THE PROBLEM ALONG WITH A SALES SLIP, DATE, PLACE OF PURCHASE AND PRICE PAID. WE WILL DO OUR BEST TO REPAIR OR REPLACE YOUR CART PROMPTLY.

**DEFECTIVE
CARTS**



90 DAY LIMITED WARRANTY

TIGER ELECTRONICS, INC. (TIGER) WARRANTS TO THE ORIGINAL CONSUMER PURCHASER OF THIS PRODUCT THAT THE PRODUCT WILL BE FREE FROM DEFECTS IN MATERIALS OR WORKMANSHIP FOR 90 DAYS FROM THE DATE OF ORIGINAL PURCHASE. THIS WARRANTY DOES NOT COVER DAMAGES RESULTING FROM ACCIDENT, NEGLIGENCE, IMPROPER SERVICE OR USE OR OTHER CAUSES NOT ARISING OUT OF DEFECTS IN MATERIALS OR WORKMANSHIP.

DURING THIS 90-DAY WARRANTY PERIOD, THE PRODUCT WILL EITHER BE REPAIRED OR REPLACED (AT TIGER'S OPTION) WITHOUT CHARGE TO THE PURCHASER, WHEN RETURNED WITH PROOF OF THE DATE OF PURCHASE TO TIGER.

PRODUCT RETURNED TO TIGER WITHOUT PROOF OF THE DATE OF PURCHASE OR AFTER THE 90-DAY WARRANTY PERIOD HAS EXPIRED, BUT PRIOR TO ONE YEAR FROM THE ORIGINAL DATE OF PURCHASE, WILL BE REPAIRED OR REPLACED (AT TIGER'S OPTION) FOR A SERVICE FEE OF U.S. \$10. PAYMENTS MUST BE BY CHECK OR MONEY ORDER PAYABLE TO TIGER ELECTRONICS, INC.

THE FOREGOING STATES THE PURCHASER'S SOLE AND EXCLUSIVE REMEDY FOR ANY BREACH OF WARRANTY WITH RESPECT TO THE PRODUCT.

ALL PRODUCT RETURNED MUST BE SHIPPED PREPAID AND INSURED FOR LOSS OR DAMAGE TO:

**TIGER ELECTRONICS, INC. REPAIR DEPT.
980 WOODLANDS PARKWAY
VERNON HILLS, ILLINOIS 6006L USA**

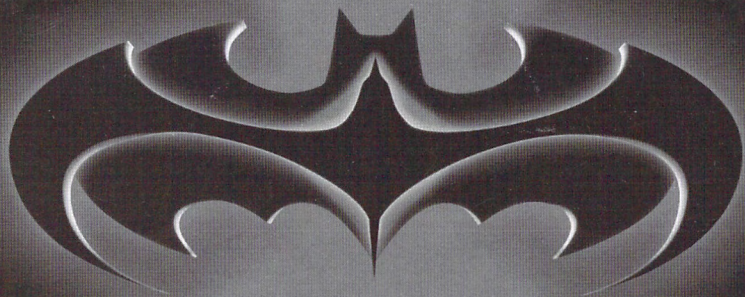
THE PRODUCT SHOULD BE CAREFULLY PACKED IN THE ORIGINAL BOX OR OTHER PACKING MATERIALS SUFFICIENT TO AVOID DAMAGE DURING SHIPMENT. INCLUDE A COMPLETE WRITTEN DESCRIPTION OF THE DEFECT, A CHECK IF PRODUCT IS BEYOND THE 90-DAY WARRANTY PERIOD, AND YOUR PRINTED NAME, ADDRESS AND TELEPHONE NUMBER.

THIS WARRANTY IS IN LIEU OF ALL OTHER WARRANTIES AND NO OTHER REPRESENTATIONS OR CLAIMS OF ANY NATURE SHALL BE BINDING ON OR OBLIGATE TIGER IN ANY WAY. ANY IMPLIED WARRANTIES APPLICABLE TO THIS PRODUCT, INCLUDING WARRANTIES OF MERCHANTABILITY OR FITNESS FOR A PARTICULAR PURPOSE, ARE LIMITED TO THE NINETY (90) DAY PERIOD DESCRIBED ABOVE. IN NO EVENT WILL TIGER BE LIABLE FOR ANY SPECIAL, INCIDENTAL, OR CONSEQUENTIAL DAMAGES RESULTING FROM POSSESSION, USE, OR MALFUNCTION OF THIS TIGER PRODUCT.

SOME STATES DO NOT ALLOW LIMITATIONS AS TO HOW LONG AN IMPLIED WARRANTY LASTS AND/OR EXCLUSIONS OR LIMITATIONS OF INCIDENTAL OR CONSEQUENTIAL DAMAGES, SO THE ABOVE LIMITATIONS AND/OR EXCLUSIONS OF LIABILITY MAY NOT APPLY TO YOU. THIS WARRANTY GIVES YOU SPECIFIC RIGHTS, AND YOU MAY ALSO HAVE OTHER RIGHTS WHICH VARY FROM STATE TO STATE.

IF YOUR PRODUCT IS NOT WORKING PROPERLY, OR IF YOU HAVE ANY QUESTIONS AND/OR COMMENTS, PLEASE CALL US TOLL-FREE AT 1-888-TIGR-SOS, AND A SERVICE REPRESENTATIVE WILL BE HAPPY TO HELP YOU.





**BATMAN & ROBIN AND ALL RELATED
CHARACTERS, NAMES AND INDICIA ARE
TRADEMARKS OF DC COMICS. © 1997
©, TM, & © 1997 TIGER ELECTRONICS, INC.
ALL RIGHTS RESERVED.**

**TIGER ELECTRONICS, INC.
980 WOODLANDS PARKWAY
VERNON HILLS, ILLINOIS 60061 USA
1-888-TIGR-505**

WWW.TIGERTOYS.COM

**TIGER ELECTRONICS (UK) LLC.
BELVEDERE HOUSE, VICTORIA AVENUE
HARROGATE, NORTH YORKSHIRE HG1 1EL,
ENGLAND.**