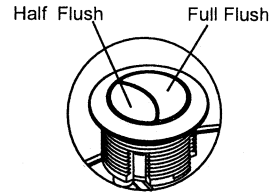
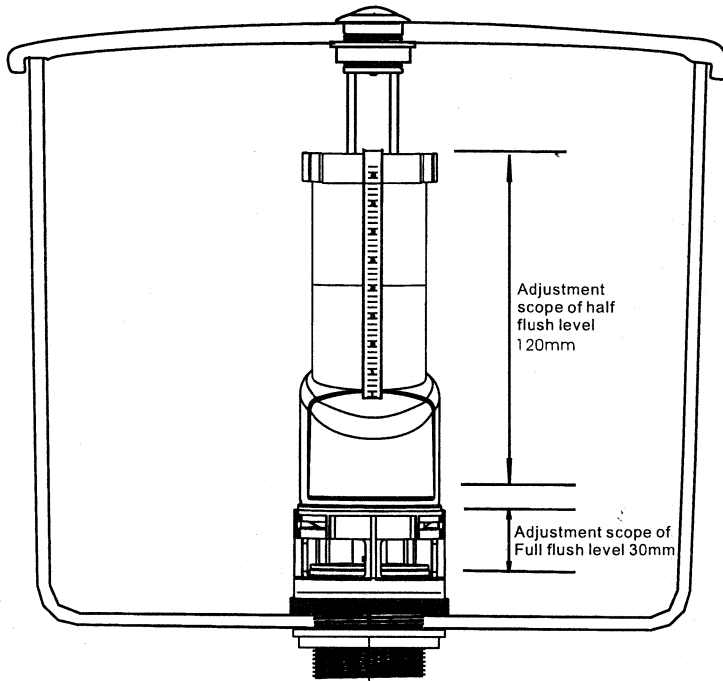


# Outlet Valve Installation Instructions

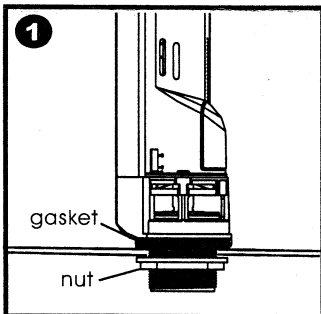
Attention: Please give this manual to final users



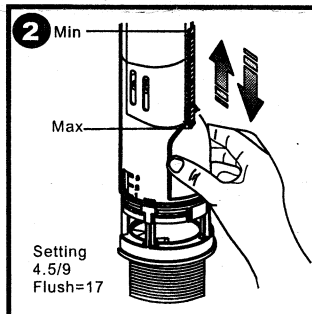
**WARNING:**

Do not use an in-tank type bowl cleaner  
The installation of the gallery cisterns and valve Adjustments must be carried out by a licensed Plumber, Improper handling or installation of this Product will void the warranty .

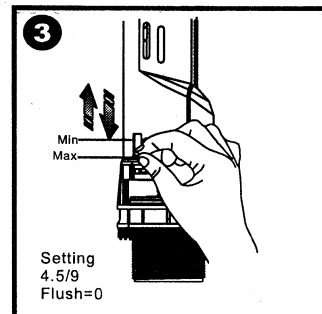
**View from rear**



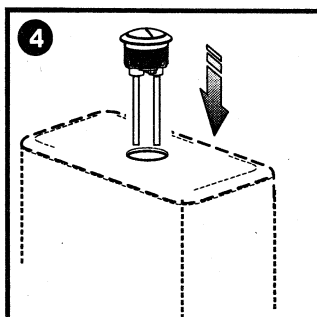
Insert the valve and tighten the nut and gasket till a water tight seal is achieved.



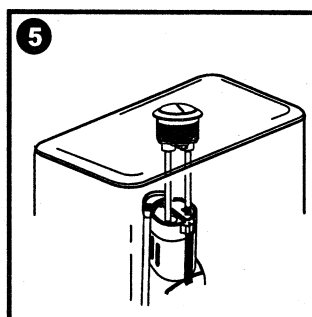
To adjust half flush refer to figure 2 above.



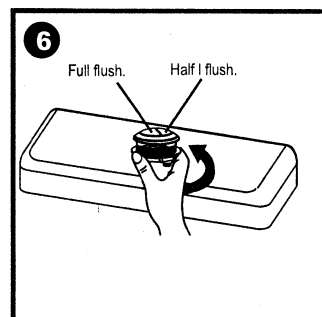
To adjust full flush refer to figure 3 set at MIN for lowest volume & MAX for highest volume.



If required adjust & cut the push rods to suit.



Always set the half flush button and half flush valve plunger to the left hand side.

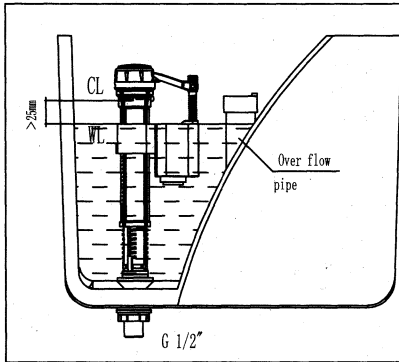


Ensure the button is tight and secure prior to operation.

The outlet valve is pre set to dispense 3 litres, half flush & 6 litres, full flush when supplied & installed in cisterns. To adjust to 4.5/9 litres, refer to figures 2 & 3 above.

# Fill Valve Installation Instruction

## I Fill Valve Installation Drawing

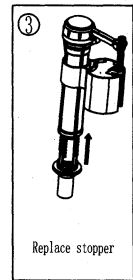
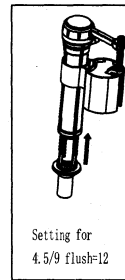
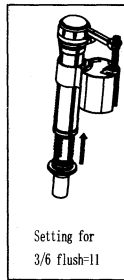
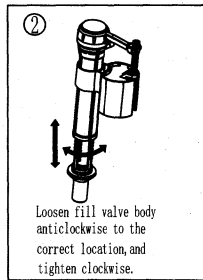
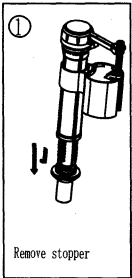


NOTE:

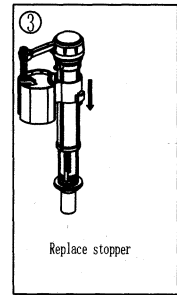
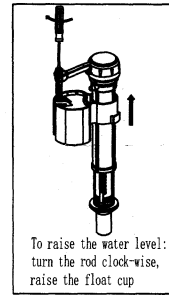
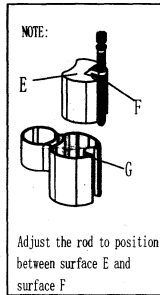
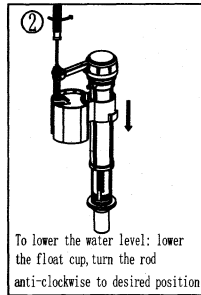
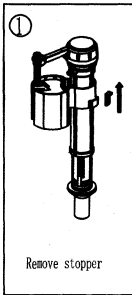
1. Please read carefully the following installation instructions. In order to avoid injury or damaging equipment, please install the equipment by following the instructions step by step.
2. These instructions are compiled according to up-to-date product information. We reserve the right to change specifications, packaging and supply without prior notice.
3. We shall not be responsible or liable for any failure of, or damage to, this plumbing product caused by its use in toilet tanks containing high concentrations of chlorine or chlorine-related products.
4. We shall not be responsible for any failure caused by the use of any parts from other companies.
5. Water temperature: 0 °C-45 °C.
6. Water pressure: 0.02Mpa-0.8Mpa.

## II Water level adjustable

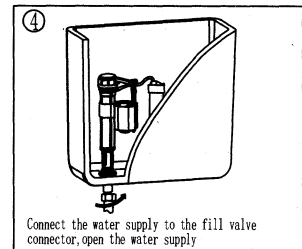
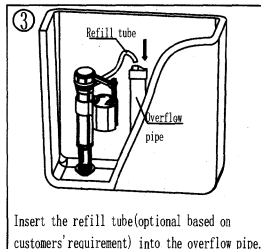
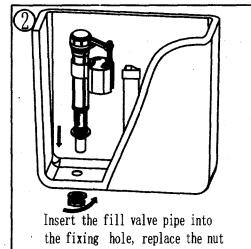
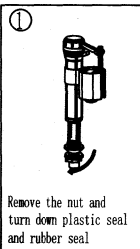
Water level adjustment



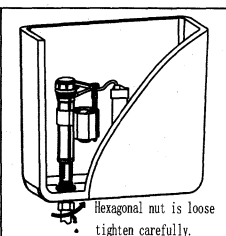
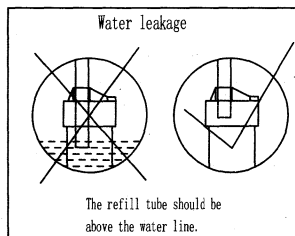
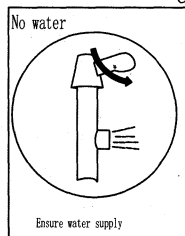
To adjust water level slightly



## III Installation of fill valve



## IV Problem Solving



## V To clean filter

(Please clean the filter regularly)

